

48 Venus
door leaf, laminated door-frame

48 Venus Roco 1 - Tears
door leaf, laminated door-frame

48 Venus Roco 1 - Diamond
door leaf, laminated door-frame



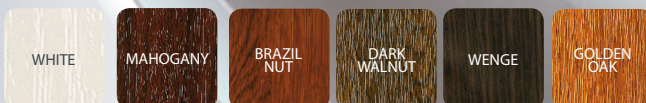
48 Venus Roco 2 - Tears
door leaf, laminated door-frame

48 Venus Roco 2 - Megres
door leaf, laminated door-frame

48 Venus Roco - Diamond
door leaf, laminated door-frame

The width of the door: **800 mm, 900 mm**

AVAILABLE COLOURS:



VENUS
DEEP EMBOSSED

48 **VENUS**

VENUS

DEEP EMBOSSED

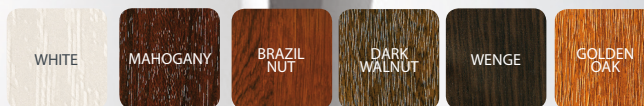
48 VENUS



48 **Venus Roco - Reflex**
door leaf, laminated door-frame

AVAILABLE COLOURS:

The width of the door: **800 mm, 900 mm**



SMOOTH

48 SMOOTH



48 **Smooth**
door leaf, laminated door-frame

AVAILABLE COLOURS:

The width of the door: **800 mm, 900 mm**



The width of the door: **1000 mm**





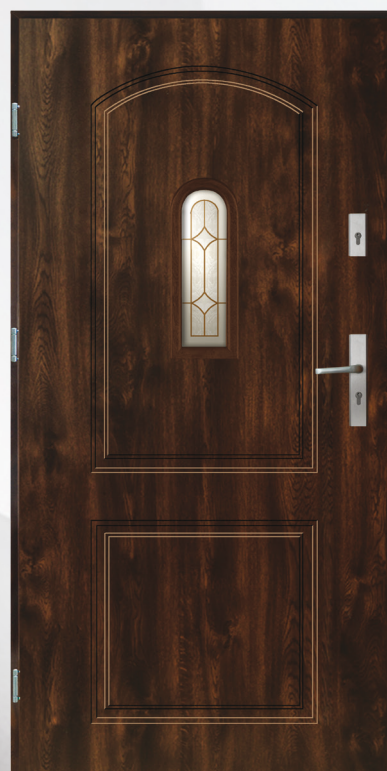
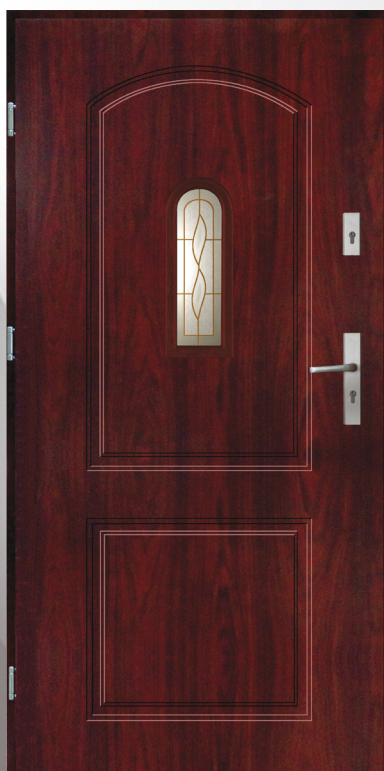
48Titanium
door leaf, laminated door-frame

48Titanium Roco - Diamond
door leaf, laminated door-frame

48Titanium Roco - Reflex
door leaf, laminated door-frame

TITANIUM
DEEP EMBOSSED

48 TITANIUM



48Saturn
door leaf, laminated door-frame

48Saturn Roco 1 - Tears
door leaf, laminated door-frame

48Saturn Roco 1 - Diamond
door leaf, laminated door-frame

SATURN
DEEP EMBOSSED

48 SATURN

The width of the door: **800 mm, 900 mm**

AVAILABLE COLOURS:



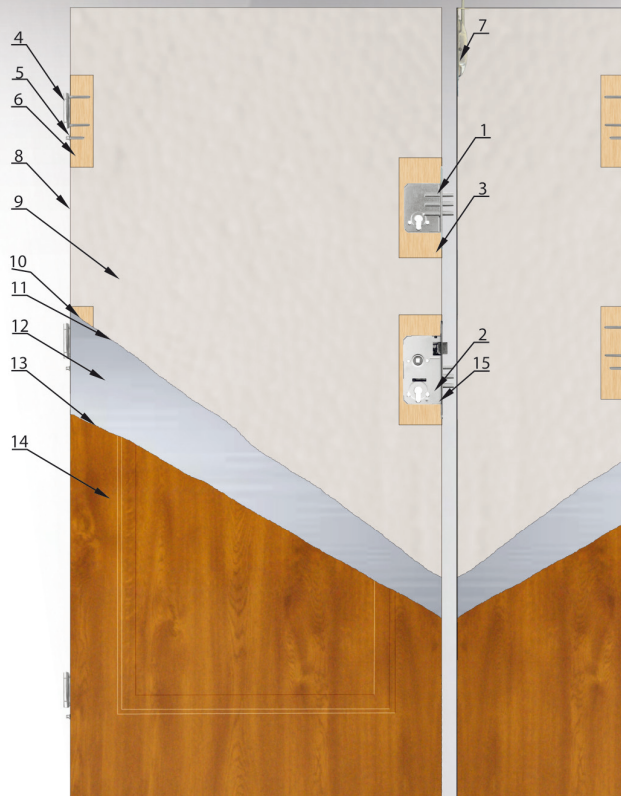
TWO - LEAF DOORS

55

**MODERN DS
VENUS DS
ELLIPSE DS**

Metal, entrance doors
external/internal (thickness 55 mm)
in accordance with standard PN-EN 14351-1:2006+A1:2010

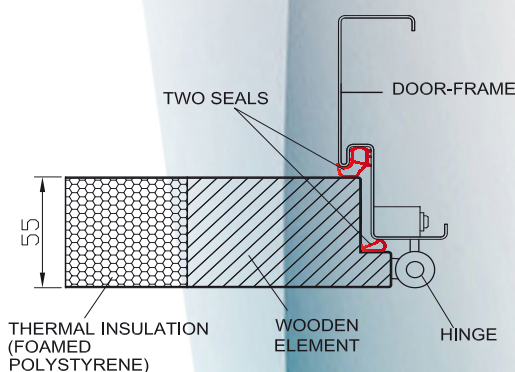
CONSTRUCTION OF THE DOOR:



1. Additional lock
2. Main lock
3. Pocket of lock
4. Tripartite hinges Ø16
5. Reinforcement for the hinges
6. Bolts protecting against forcing
7. Flush bolts
8. Seal faying
9. Slab of hard polystyrene
10. Glue
11. The zinc coating
12. Steel sheet
13. The zinc coating
14. Laminate with woodgrain finish
15. Lock adjustment

GUARANTEE
24
MONTHS

THE PROFILE OF LEAF – DOOR AND DOOR-FRAME:



ADOPTION

- Doors for the installation in housing development and public utility
- smooth or pressed of steel sheet covered with PVC decorative film, resistant to UV rays,
 - filled with slab of foamed hard polystyrene,
 - protected against forcing: lower three-bolt lock, upper three-bolt lock, two flush bolts and six fixed bolts protecting against forcing,
 - two seals on the door circumference: seal of leaf and seal of door frame,
 - structure of hinges for doors opening outside and inside makes it impossible to remove door leaf.

STANDARD EQUIPMENT:

- two door leaves with seal,
- door-frame in the same color like a leaf with seal,
- main three-bolt lock,
- additional three-bolt lock,
- fixed bolts protecting against forcing,
- tripartite hinges Ø16,
- flush bolts,
- stainless steel threshold 1200/1400,
- lock adjustment.

In the standard equipment the frame which is available is:

- asymmetric.

ADDITIONAL EQUIPMENT FOR EXTRA CHARGE	
Lock insert 30x50 Lock insert with knob 30x50	„system on one key” 6.2.C. category
Lock insert 30x50 Lock insert with knob 30x50	„system on one key” 6.2.B. category
Lock insert 30x50 Lock insert with knob 30x50	„system on one key”
Lock insert 30x50	
Lock insert with knob 30x50	
Handle NIAGARA - AXA	
Handle OTTAWA - AXA	
Handle KASTOR - MAR-TOM	
Handle ZEUS - MAR-TOM	
Handle PROXIMA - MAR-TOM	
Handle-rail NIAGARA - AXA	
Viewfinder	

The rate of acoustic insulation – 29 dB

Heat permeability rate of sash section:

width 1200mm complete - 1,2 [W/(m²*K)] width 1200mm glazed - 1,5[W/(m²*K)]

width 1400mm complete - 1,2 [W/(m²*K)] width 1400mm glazed - 1,5[W/(m²*K)]

Attention: Is not possible to reduce the length of door